



GD-300Q (QAF) QUINTUPLEX CONTINUOUS DUTY PLUNGER PUMP

SPECIFICATIONS:

Maximum BHP: 300 (224 kw)

Maximum RPM: 370

No. of Plungers: 5

Stroke Length: 6 in. (152 mm)

Plunger Load: 9,633 lbs. (4,378 kg)

Discharge Hydrostatic Test Pressure

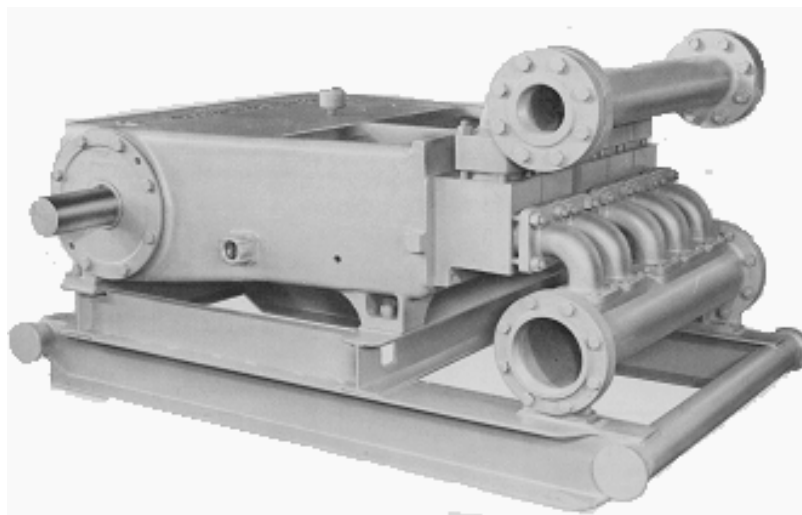
LP – 2,100 psi (148 kg/cm²)

MP – 4,600 psi (323 kg/cm²)

HP – 7,500 psi (527 kg/cm²)

Oil Capacity: 32 gal. (121 liters)

Pump Weight: 8,035 lbs. (3,645 kg)



Shown with optional skid

PERFORMANCE RATINGS

Plunger Size		Maximum Pressure		Displacement per revolution		Gallons Per Minute/Liters at the following RPM:											
						175		200		250		300		350		370	
in.	mm	PSI	kg/cm ²	gal.	liters	GPM	LPM	GPM	LPM	GPM	LPM	GPM	LPM	GPM	LPM	GPM	LPM
LP ALUMINUM BRONZE FLUID END (QAFA)																	
4.50	114	606	43	2.066	7.819	362	1368	413	1564	517	1955	620	2346	723	2737	764	2893
4.25	108	680	48	1.843	6.975	323	1221	369	1395	461	1744	553	2093	645	2441	682	2581
4.00	102	765	54	1.632	6.177	286	1081	326	1235	408	1544	490	1853	571	2162	604	2285
3.75	95	870	61	1.435	5.431	251	950	287	1086	359	1358	431	1629	502	1901	531	2009
3.50	89	1000	70	1.250	4.731	219	828	250	946	313	1183	375	1419	438	1656	463	1750
3.25	83	1160	82	1.078	4.080	189	714	216	816	270	1020	323	1224	377	1428	399	1510
3.00	76	1360	96	0.918	3.474	161	608	184	695	230	869	275	1042	321	1216	340	1285
MP ALUMINUM BRONZE FLUID END (QAFB)																	
2.75	70	1620	114	0.772	2.922	135	511	154	584	193	731	232	877	270	1023	286	1081
2.50	64	1960	138	0.638	2.414	112	422	128	483	160	604	191	724	223	845	236	893
2.25	57	2420	170	0.517	1.956	90	342	103	391	129	489	155	587	181	685	191	724
2.00	51	3065	216	0.408	1.544	71	270	82	309	102	386	122	463	143	540	151	571
HP ALUMINUM BRONZE FLUID END (QAFD)																	
1.75	44	4000	281	0.313	1.184	55	207	63	237	78	296	94	355	110	414	116	438
1.50	38	5000	352	0.230	0.870	40	152	46	174	58	218	69	261	81	305	85	322
1.38	35	5000	352	0.193	0.730	34	128	39	146	48	183	58	219	68	256	71	270

Based on 90% mechanical efficiency and 100% volumetric efficiency.
For applications within shaded area contact Customer Service

Specifications subject to change without notice.



GD-300Q (QAF) QUINTUPLEX CONTINUOUS DUTY PLUNGER PUMP

STANDARD EQUIPMENT

- Oil level gauge.
- Crankshaft type construction.
- Double-extended crankshaft 4.75" (12.06 mm) dia., 8.0" (20.32 mm) long.
- Keyway (L x W x H) 7.8" x 1.25" x .71" (19.81 x 3.18 x 1.8 mm).
- Turbo lubrication.
- Flanged suction and discharge on either side.
- Stainless steel clamp connections between plungers and push rods.
- Removable stuffing boxes with threaded glands.
- Cradle cover.
- Colmonoy, ceramic, or tungsten carbide plungers.
- Disc style aluminum bronze, stainless steel, or monel valves.
- Wing-guided aluminum bronze, steel, or stainless steel valves.
- Non-adjustable, 838 Buna, spring loaded 1056 double stack or 242 spiral wound Kelvar® packing.

ACCESSORIES

- Mechanical lubricator for stuffing box packing.
- Suction stabilizers.
- Discharge pulsation dampeners.
- Discharge pressure relief valve.
- Fabricated steel skid under pump and drive.
- V-belt drive assembly.
- Totally enclosed metal belt guard (OSHA approved).
- Valve seat puller.
- Valve seat driver.
- Valve cage wrench.
- Companion flanges.

	Suction Manifold	Discharge Manifold
QAFA	8" 150# ANSI	5" 600# ANSI
QAFB	6" 150# ANSI	4" 1500# ANSI
QAFD	4" 300# ANSI	2" 2,500# RJT
QAFD	4" 150# ANSI	2- 9/16" 10,000# API

NOTE: All installations must contain a pressure relief valve in the discharge line near the pump to help prevent breakage.

Dimensions: Length 68.84", Width 77.8", Height 28.25"

MATERIAL SPECIFICATIONS

SERVICE	TYPE	CYLINDER	PACKING	STUFFING BOX	COMPONENT	MATERIAL
QAFA	Low Pressure	ASTM B-148-9D Aluminum Bronze	Buna-N Non-Adjustable Type	ASTM B-148-9D Aluminum Bronze	Crankshaft Connecting Rods	Cast Nodular Iron Cast Nodular Iron
QAFB	Medium Pressure	ASTM B-148-9D Aluminum Bronze	Buna-N Non-Adjustable Type	ASTM B-148-9D Aluminum Bronze	Crossheads Frame	Cast Nodular Iron Cast Iron
QAFD	High Pressure	ASTM A-514 Forged Steel	Buna-N Non-Adjustable Type	ASTM B-148-9D Aluminum Bronze	Bearing-Main Bearing-Crankpin	Tapered Roller Steel Lined with Tin & Babbit
QAFD	High Pressure	AISI 1035 Block Steel	Buna-N Non-Adjustable Type	AISI 1035 Carbon Steel	Bushing-Crosshead	Steel Lined with Tin & Babbit

*Materials listed are furnished as standard equipment. Alternate materials available upon request.



For additional information contact your local representative or
Gardner Denver Pump Division,
1800 Gardner Expressway, Quincy, Illinois 62301
Customer Service Department
Telephone: (800) 682-9868 FAX: (217) 224-7814
Specifications subject to change without notice.
Copyright 2002 Gardner Denver Inc.