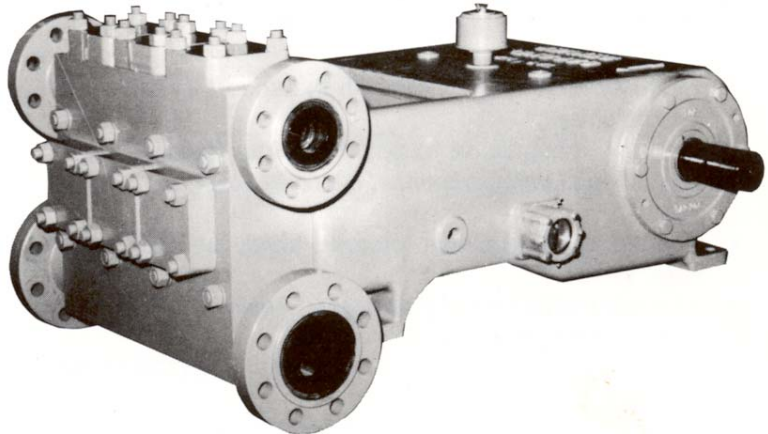




## GD-65T (TAC) CONTINUOUS DUTY PLUNGER PUMP

### SPECIFICATIONS:

**Maximum BHP: 65.5 (49 kw)**  
**Maximum RPM: 500**  
**No. of Plungers: 3**  
**Stroke Length: 3 in. (76 mm)**  
**Plunger Load: 5,200 lbs. (2,360 kg)**  
**Discharge Hydrostatic Test Pressure**  
     **LP – 3,300 psi (232 kg/cm<sup>2</sup>)**  
     **MP – 4,500 psi (316 kg/cm<sup>2</sup>)**  
     **HP – 7,500 psi (527 kg/cm<sup>2</sup>)**  
**Oil Capacity: 6 gal. (23 liters)**  
**Pump Weight: 1,790 lbs. (812 kg)**



### PERFORMANCE RATINGS

Plunger Size		Maximum Pressure		Displacement per revolution		Gallons/Liters per Minute at the following RPM:											
						175		200		300		400		450		500	
in.	mm	PSI	kg/cm <sup>2</sup>	Gal.	Ltr.	GPM	LPM	GPM	LPM	GPM	LPM	GPM	LPM	GPM	LPM	GPM	LPM
<b>LP CAST ALUMINUM BRONZE (TACA) OR CARBON STEEL (TACE) FLUID END</b>																	
3.00	76	675	47	0.275	1.041	48	182	55	208	83	312	110	416	124	468	138	520
2.75	70	805	56	0.231	0.875	40	153	46	175	69	263	93	350	104	394	116	438
2.50	64	975	68	0.191	0.724	33	127	38	145	57	217	77	290	86	326	96	362
2.25	57	1190	83	0.155	0.586	27	103	31	117	46	176	62	234	70	264	77	293
2.00	51	1520	106	0.122	0.463	21	81	24	93	37	139	49	185	55	208	61	232
1.75	44	2000	140	0.094	0.356	16	62	19	71	28	107	38	142	42	160	47	178
1.50	38	2220	155	0.069	0.261	12	46	14	52	21	78	28	104	31	118	35	131
<b>MP CARBON STEEL (TACC) FLUID END</b>																	
2.25	57	1190	83	0.155	0.587	27	103	31	117	47	176	62	235	70	264	78	293
2.00	51	1520	106	0.122	0.462	21	81	24	92	37	139	49	185	55	208	61	231
1.75	44	2000	140	0.094	0.356	16	62	19	71	28	107	38	142	42	160	47	178
1.50	38	2220	155	0.069	0.261	12	46	14	52	21	78	28	104	31	118	35	131
<b>HP BLOCK ALUMINUM BRONZE (TACB) FLUID END</b>																	
1.50	38	2680	188	0.069	0.261	12	44	14	52	21	78	28	104	31	118	35	131
1.25	32	3860	270	0.048	0.182	8	32	10	36	14	55	19	73	22	82	24	91
1.00	25	5000	350	0.031	0.117	5	21	6	23	9	35	12	47	14	53	16	59

Based on 90% mechanical efficiency and 100% volumetric efficiency.  
For applications within shaded area contact Customer Service.

Specifications subject to change without notice.



## GD 65T (TAC) CONTINUOUS DUTY PLUNGER PUMP

### STANDARD EQUIPMENT

- Oil level gauge.
- Crankshaft type construction.
- Double-extended crankshaft 2.62" (6.65 mm) dia., 5.0" (12.7 mm) long.
- Keyway (L x W x H) 4.35" x .625" x .36" (11.05 x 1.59 x .91 mm).
- Turbo lubrication.
- Suction and discharge connections on either side.
- Stainless steel clamp connections between plungers and push rods.
- Removable stuffing boxes with threaded glands.
- Cradle cover.
- Colmonoy, ceramic, or tungsten carbide plungers.
- Disc style aluminum bronze, stainless steel, or monel valves.
- Wing-guided aluminum bronze, steel, or stainless steel valves.
- Non-adjustable packing standard. Kevlar or double stack packing optional.

### ACCESSORIES

- Mechanical lubricator for stuffing box packing.
- Suction stabilizers.
- Discharge pulsation dampeners.
- Discharge pressure relief valve.
- Fabricated steel skid under pump and drive.
- V-belt drive assembly.
- Totally enclosed metal belt guard (OSHA approved).
- Valve seat puller.
- Valve seat driver.
- Valve cage wrench.
- Companion flanges.

	<u>Suction Manifold</u>	<u>Discharge Manifold</u>
TACA	3" 150# ANSI	2" 900# ANSI
TACE	3" 1500#	2" 1500#
TACC	3" 1500#	2" 1500#
TACB	3" 150# ANSI	1 1/2" 7500# ANSI

**Note:** All installations must contain a pressure relief valve in the discharge line near the pump to help prevent breakage.

### MATERIAL SPECIFICATIONS

SERVICE	TYPE	CYLINDER	PACKING	STUFFING BOX	COMPONENT	MATERIAL
TACA	Low Pressure	ASTM B-148-9D	Buna-N Non-	ASTM B-148-9D	Crankshaft	Cast Nodular Iron
		Aluminum Bronze	Adjustable Type	Aluminum Bronze	Connecting Rods	Cast Nodular Iron
TACE	Low Pressure	AISI 1035	Buna-N Non-	AISI 1035	Crossheads	Cast Nodular Iron
		Carbon Steel	Adjustable Type	Carbon Steel	Frame	Cast Iron
TACC	Medium Pressure	AISI 1035	Buna-N Non-	AISI 1035	Bearing-Main	Tapered Roller Steel Lined with Tin & Babbit
		Carbon Steel	Adjustable Type	Carbon Steel	Bearing-Crankpin	
TACB	High Pressure	ASTM B-148-9D	Buna-N Non-	ASTM B-148-9D	Bushing-Crosshead	Bronze
		Aluminum Bronze	Adjustable Type	Aluminum Bronze		

\*Materials listed are furnished as standard equipment. Alternate materials available upon request.