



FXE (FY-FXE) Two-Piece Fluid End DUPLEX POWER PUMP

SPECIFICATIONS:

Maximum BHP

Mud Service: 102 (76 kw)

Ind'l. Service: 133.4 (99.5 kw)

Maximum Jackshaft RPM

Mud Service: 390

Ind'l. Service: 510

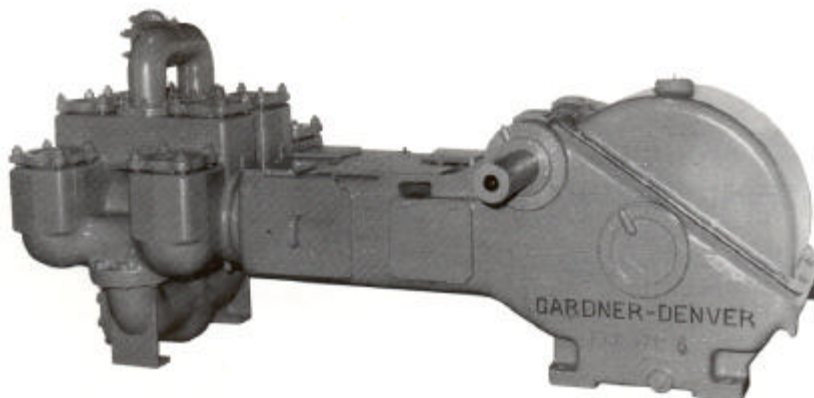
No. of Pistons: 2

Stroke Length: 10 in. (254 mm)

Piston Rod Load: 13480 lbs. (6,110 kg)

Oil Capacity: 14 gal. (53 liters)

Pump Weight: 7,090 lbs. (3,216 kg)



PERFORMANCE RATINGS

| FXE DUPLEX INDUSTRIAL PUMP for Oil Line, Mining and Industrial Service | | | | | | | | | | | | | | | | |
|--|-----------------|--|-----|--------------|------|--------------|----------------|------------------------|----------------------------------|--------------------|--------------------------|----------------|------------------------|------------------------------|--------------------|--------------------------|
| | | Normal Operation | | | | | | | ** Maximum Recommended Operation | | | | | | | |
| Model | Stroke | Liner Size Diameter | | Displacement | | Max Pump RPM | Jack-shaft RPM | Input HP at Max. Speed | Displacement | | Max Pump RPM | Jack-shaft RPM | Input HP at Max. Speed | *** Maximum Working Pressure | | Maximum Piston Load |
| | | in. | mm | gpm | lpm | | | | gpm | lpm | | | | psi | kg/cm ² | |
| FXE(*) | 10" (254 mm) | 7 1/2 | 191 | 427 | 1616 | 57 | 342 | 89.4 | 637 | 2411 | 85 | 510 | 133.4 | 305 | 21 | 13480 lbs. (6,110 kg) |
| | | 7 1/4 | 184 | 398 | 1506 | | | | 594 | 2248 | | | | 326 | 23 | |
| | | 7 | 178 | 371 | 1404 | | | | 553 | 2093 | | | | 350 | 25 | |
| | | 6 1/2 | 165 | 319 | 1207 | | | | 474 | 1798 | | | | 406 | 29 | |
| | | 6 | 152 | 270 | 1022 | | | | 403 | 1525 | | | | 477 | 34 | |
| | | 5 1/2 | 140 | 226 | 855 | | | | 337 | 1276 | | | | 567 | 40 | |
| | | 5 | 127 | 185 | 700 | | | | 276 | 1045 | | | | 686 | 48 | |
| FXE DUPLEX MUD PUMP for Mud, Grout and Cement Service | | | | | | | | | | | | | | | | |
| | | Normal / Maximum Recommended Operation | | | | | | | | | | | | | | |
| Model | Stroke | Liner Size Diameter | | Displacement | | Max Pump RPM | Jack-shaft RPM | Input HP at Max. Speed | *** Maximum Working Pressure | | Maximum Piston Load | | | | | |
| | | in. | mm | gpm | lpm | | | | psi | kg/cm ² | | | | | | |
| FXE(*) | 10" (254 mm) | 7 1/2 | 191 | 487 | 1843 | 65 | 390 | 102 | 305 | 21 | 13480 lbs. (6,110 kg) | | | | | |
| | | 7 1/4 | 184 | 454 | 1718 | | | | 326 | 23 | | | | | | |
| | | 7 | 178 | 423 | 1601 | | | | 350 | 25 | | | | | | |
| | | 6 1/2 | 165 | 364 | 1378 | | | | 406 | 29 | | | | | | |
| | | 6 | 152 | 308 | 1166 | | | | 477 | 34 | | | | | | |
| | | 5 1/2 | 140 | 257 | 973 | | | | 567 | 40 | | | | | | |
| | | 5 | 127 | 211 | 799 | | | | 686 | 48 | | | | | | |

Based on 90% mechanical efficiency and 100% volumetric efficiency.

Specifications subject to change without notice.

** These speeds are recommended for favorable suction conditions and consideration must be given to viscosity and character of fluids.

*** Maximum working pressure shown applies to the fluid ends. Power ends are designed for certain maximum piston rod loads, and in service the power end determines the maximum pressure on a given size piston. Tabulated maximum pressure for any given size piston for maximum piston rod load must not be exceeded even at reduced RPM. Fluid cylinder liners and pistons are interchangeable in all sizes except for the FXF cylinders fitted with 4 1/2" parts and FXX and FXD cylinders with 5 1/2" parts.



FXE (FY-FXE) DUPLEX POWER PUMP

STANDARD EQUIPMENT

- Rods and pistons.
- Liners and valves.
- Double-extended jackshaft with extension for one side.
- Piston rods have Gardner Denver No. 1 or API No. 1 taper (optional).
- Wood skid.
- Non-adjustable packing standard. Kevlar or double stack packing optional.

Suction Connection: 10" NPT 150#

Discharge Connection: 4" NPT 300#

Jackshaft Extension

Diameter: 3.25"

Length: 12.38"

Keyway: 12.38" L x 3/4" W x 3/4" H

Dimensions: Length 115.6", Width 59.4", Height 42.5"

Note: All installations must contain a pressure relief valve in the discharge line near the pump to help prevent breakage.

OPTIONAL EQUIPMENT

- Surge chamber.
- Steel skid.
- Stainless steel valves.
- Metal packed pistons.
- Special jackshafts.
- Top motor mount.

| *MODEL DESIGNATIONS | |
|-------------------------------|---------------------|
| MODEL | FY-FXE |
| Mud Service | FXEA |
| Grout & Cement Service | FXEE |
| Oil Service | FXEJ |
| General Service | FXER |
| Bronze Fitted (Water Service) | FXEN |
| Stroke | 10" |
| Liner Size | |
| Maximum | 7.5" |
| Minimum | 5" |
| Fluid End Type | Cast Iron Two Piece |

MATERIAL SPECIFICATIONS

| COMPONENT | GENERAL SERVICE | MUD, GROUT and CEMENT | OIL SERVICE | WATER SERVICE | POWER END: | |
|--------------------|------------------------|--------------------------------|------------------------|--------------------------|------------------------|----------------|
| | | | | | COMPONENT | MATERIAL |
| Cylinder | Cast Iron | Cast Iron | Cast Iron | Cast Iron | Eccentric | Nodular Iron |
| Liners | Hardened Steel | Hardened Steel | Hardened Steel | Bronze | Eccentric Gear | Hardened Steel |
| Suction Manifold | Cast Iron | Cast Iron | Cast Iron | Cast Iron | Connecting Rods | Nodular Iron |
| Discharge Manifold | Cast Iron | Cast Iron | Cast Iron | Cast Iron | Crossheads | Cast Iron |
| Packing | Braided Polymer | Molded Convex | Braided Polymer | Braided Polymer | Main Bearing | Tapered Roller |
| Piston | Iron with Pacing Rings | Steel Body with Nitrile Rubber | Iron with Pacing Rings | Bronze with Pacing Rings | Connecting Rod Bearing | Bronze |
| Piston Rod | Hardened Steel | Hardened Steel | Hardened Steel | Bronze | Crosshead Pin Bearing | Bronze |
| Stuffing Box | Cast Iron | Cast Iron | Cast Iron | Cast Iron | | |
| Valve | Steel Center Guided | Steel Wing Guided | Steel Center Guided | Bronze Wing Guided | | |
| Valve Seats | Steel | Steel | Steel | Bronze | | |

*Materials listed are furnished as standard equipment. Alternate materials available upon request.



For additional information contact your local representative or

Gardner Denver Compressor and Pump Division,
1800 Gardner Expressway, Quincy, Illinois 62301
Customer Service Department
Telephone: (800) 682-9868 FAX: (217) 224-7814

Sales and Service in all major cities.